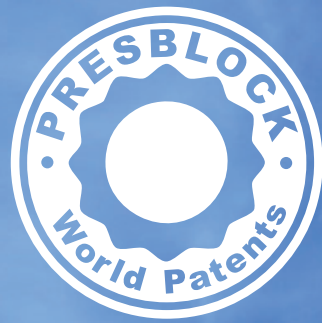


Coffee

PUSH-IN CONNECTORS AND VALVES

Push-in connectors and valves for coffee machines





CONTENTS

| | |
|--|----|
| Push-in connectors and multifunction and mono valves | 6 |
| Valve customization | 8 |
| Servo valve | 10 |
| Connectors on boiler | 22 |
| Clamps | 30 |

Our ideas our strength.



A fast information,
order management and
flexibility of production,
are the basis of our
service.



TECHNICAL CHARACTERISTICS



PUSH-IN CONNECTORS AND MULTIFUNCTION AND MONO VALVES

FOR COFFEE MACHINES WITH:

- Exterior and interior structure made with materials that have been awarded food safety certification;
- Hose fittings, with bayonet and/or with fork;
- Fittings of various sizes;



EXTERIOR STRUCTURE
PA 6,6 FV30% - PA 6,6 - PPS

INTERNAL COMPONENTS
O-ring: EPDM/PEROX compound 70 sh
Seals: Silicon compound from 55 to 70 sh
Grab-ring: Steel 12R11

All materials used are suitable for contact with foodstuffs

OPERATING PRESSURE $0 \text{ bar} < P < 20 \text{ bar}$
OPERATING TEMPERATURE $-20 \text{ °C} < T < +140 \text{ °C}$

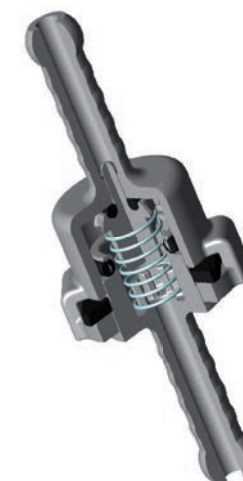
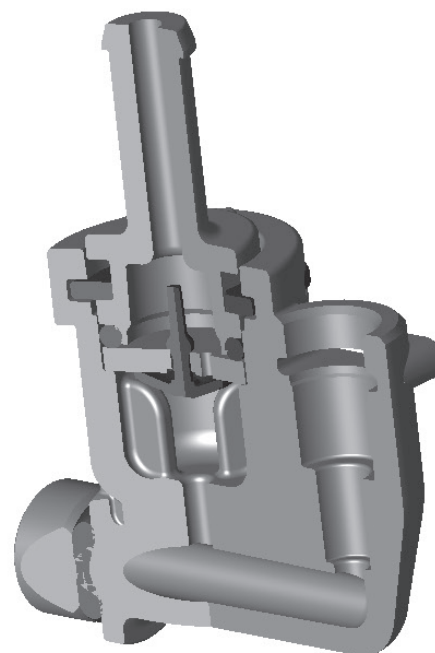


VALVE CUSTOMIZATION

COMPLETE FLEXIBILITY IN DESIGNING AND PRODUCING YOUR SPECIAL REQUIREMENTS IN ACCORDANCE WITH YOUR APPLICATION

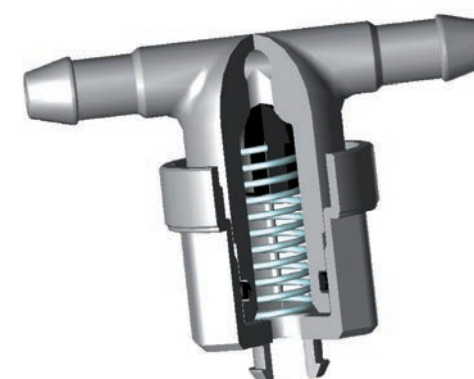
SELF-PRIMING

System patented by Pres Block s.p.a. through which it is possible to expel air from the circuit in the event that it were to be sucked in accidentally by the pump (for example, when the water tank is empty). This system is based on the coupling of a seal, with its typical umbrella-like shape, attached to a disc. The umbrella, made from silicon, comes in a variety of hardnesses (currently from 55 to 70 shore) while the disc has one or more grooves with different measurements.



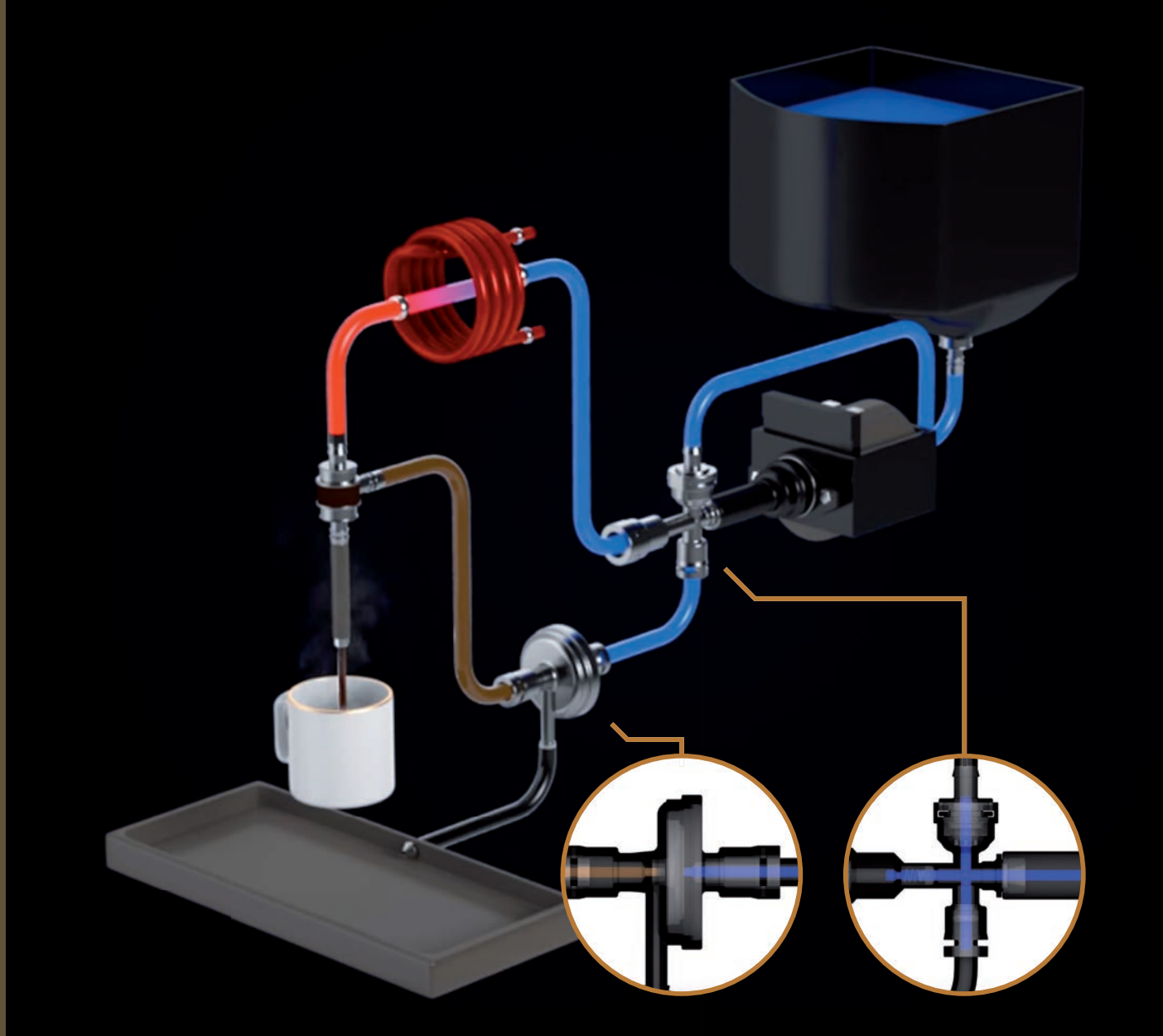
CHECK-VALVE

Check or one-way valve in line with the passage of the fluid and normally closed by a shutter by means of a spring suitably loaded in function of the opening pressure required as per the specifications.



SAFETY VALVE

Valve normally closed by a shutter with a spring suitably loaded in function of the opening pressure which, according to IEC regulation 60335-2-75, is 1.5 times greater with respect to the operating pressure within the circuit.



SERVO VALVE

System patented by Pres Block s.p.a. with which it is possible to replace a common two or three-way solenoid valve

It is constituted by a two-way diaphragm valve, and driven by a four-way valve with: threaded attachment on the pump, self-priming mechanism, check valve towards the boiler and piloting direction.

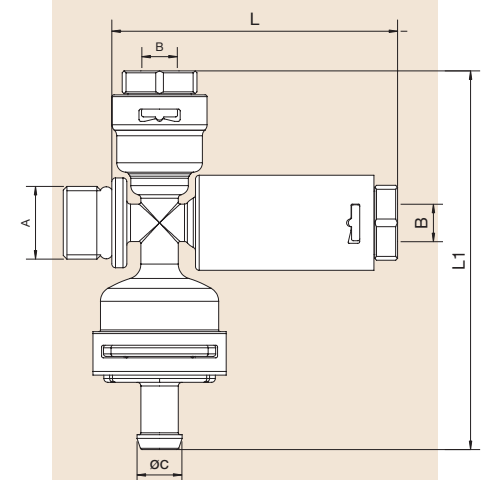
In the pouring stage, the relevant tube is fed by causing the diaphragm to close the connection between the infusion chamber and the discharge.

At the end of pouring, the self-priming enables the pressure below the pump to be lowered and thus the piloting line to be discharged so that the diaphragm can return to its resting position: now the connection between the infusion chamber and the discharge is open in order to allow the dirty water to drain into the tray avoiding dripping after the pouring of the coffee.



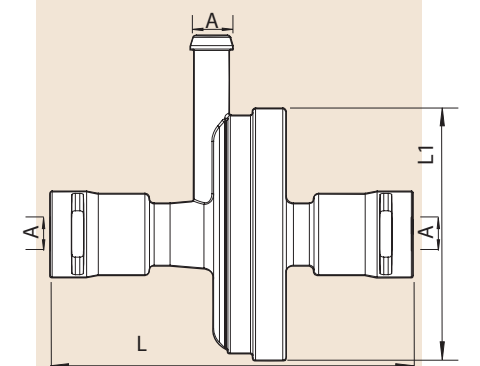
4-way valve

| CODE | A | B | C | L1 | L |
|----------------|--------|---|---|------|------|
| R4VRBG4M1/8PG7 | M 1/8" | 4 | 5 | 38,2 | 50,6 |

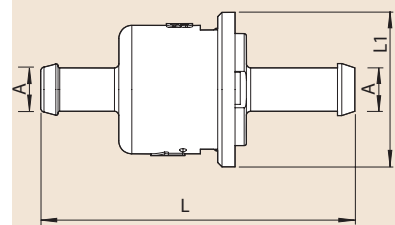


3-way valve

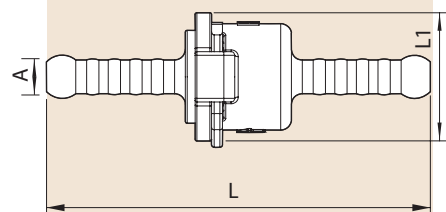
| CODE | A | B | L1 | L |
|-------------|---|---|------|------|
| RVSP-3V-PG5 | 4 | 5 | 35,6 | 51,2 |



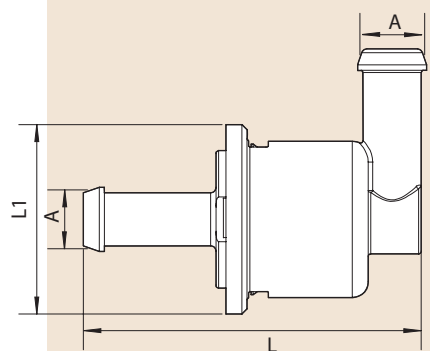
Consult our technical/commercial department for all your needs.



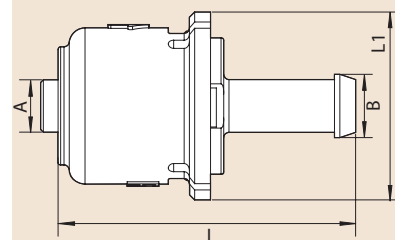
| Check valve with straight barb end connection | | | | |
|---|---|------|------|--|
| CODE | A | L | L1 | |
| RVNRPH0505 | 5 | 36,2 | 17,8 | |



| Check valve with straight barb end connection | | | | |
|---|---|------|------|--|
| CODE | A | L | L1 | |
| RVNR05CL/WK | 5 | 53,4 | 17,8 | |



| Check valve with 90° barb end connection | | | | |
|--|---|------|------|--|
| CODE | A | L | L1 | |
| RVNR0505/DN | 5 | 31,8 | 17,8 | |



| Check valve on boiler | | | | |
|-----------------------|---|---|----|------|
| CODE | A | B | L | L1 |
| FVNR-PP | 5 | 6 | 28 | 17,8 |

Consult our technical/commercial department for all your needs.

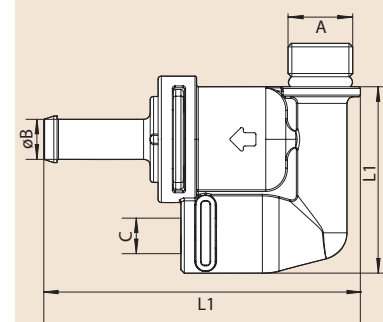
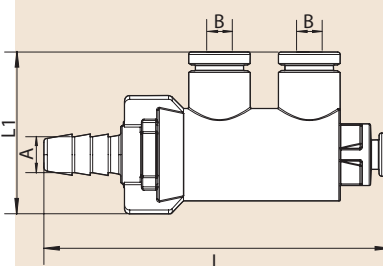
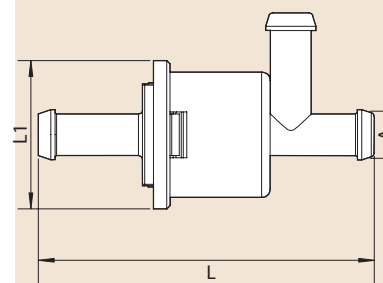
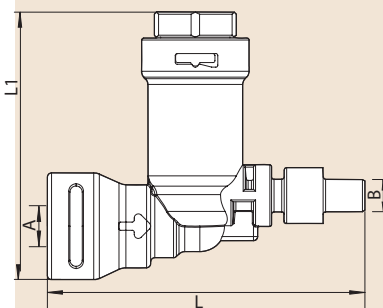
| Check valve without loss pressure | | | | |
|-----------------------------------|---|---|------|------|
| CODE | A | B | L | L1 |
| FVNRRR4 | 4 | 4 | 38,7 | 32,6 |

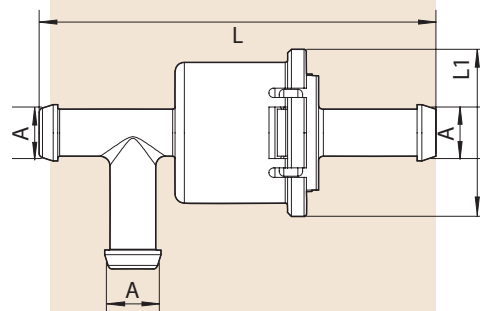
| By-pass valve | | | | |
|---------------|---|------|------|--|
| CODE | A | L | L1 | |
| RVNREE050505 | 5 | 40,3 | 17,8 | |

| Quick exchange valve | | | | |
|----------------------|---|---|------|------|
| CODE | A | B | L | L1 |
| R3V/SG/A | 7 | 4 | 67,7 | 31,5 |

| Self-priming valve with fork connection | | | | | |
|---|-------|---|---|----|------|
| CODE | A | B | C | L | L1 |
| R3VM1/8CL | M1/8" | 6 | 4 | 28 | 47,5 |

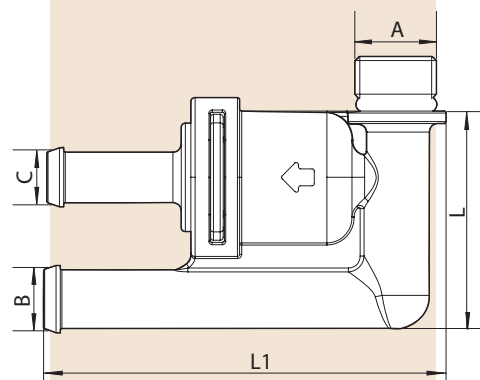
Consult our technical/commercial department for all your needs.





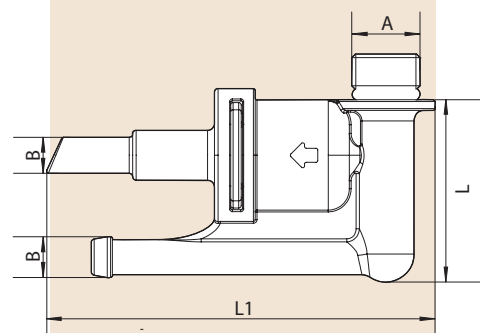
Safety valve with barb end connection

| CODE | A | L | L1 |
|--------------|---|------|------|
| RSV050505/HO | 5 | 42,3 | 17,8 |



Safety valve with barb end connection

| CODE | A | B | C | L | L1 |
|---------------|--------|---|---|------|----|
| RSIC3VPG6M1/8 | M 1/8" | 7 | 6 | 25,8 | 48 |



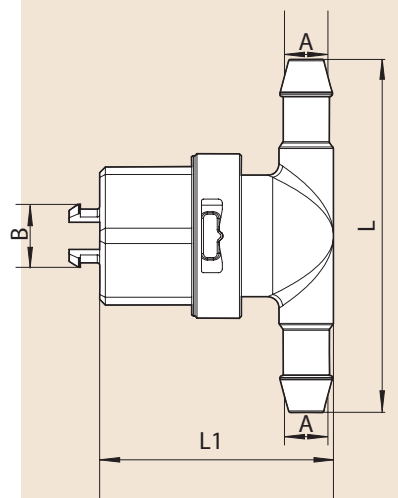
Safety valve with barb end connection

| CODE | A | B | L | L1 |
|---------------|--------|---|----|------|
| RSIC3VM1/8/MX | M 1/8" | 5 | 26 | 55,3 |

Consult our technical/commercial department for all your needs.

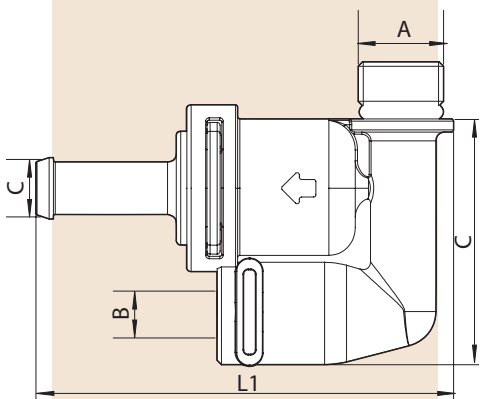
TEE safety valve with barb end connection

| CODE | A | B | L | L1 |
|--------------|---|---|----|------|
| RSICTPG6/PH1 | 5 | 8 | 46 | 30,5 |



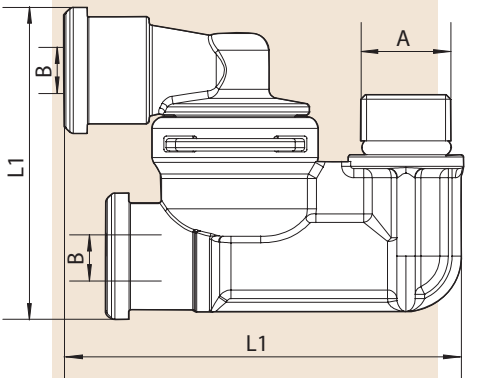
Safety valve with fork connection

| CODE | A | B | C | L | L1 |
|----------------|--------|---|---|----|------|
| RSICRR3VM1/8MX | M 1/8" | 4 | 6 | 28 | 47,6 |

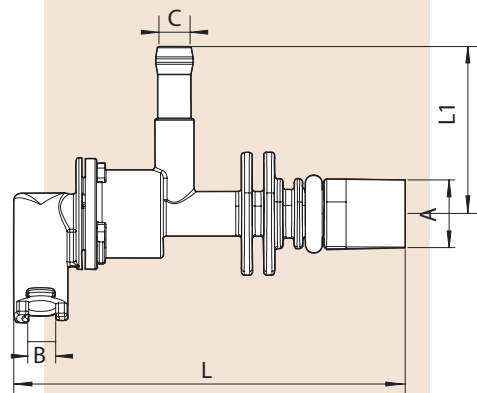


Safety valve with 90° fork connection

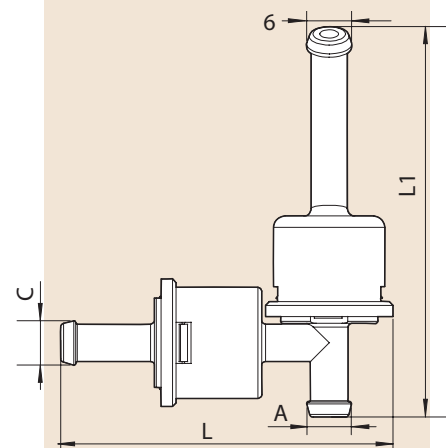
| CODE | A | B | L | L1 |
|---------------|--------|---|----|------|
| RSIC3VM1/8/MG | M 1/8" | 6 | 43 | 33,8 |



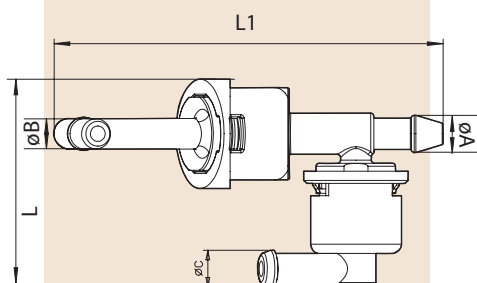
Consult our technical/commercial department for all your needs.



| Safety valve with special connection | | | | | |
|--------------------------------------|----|---|-----|------|----|
| CODE | A | B | C | L | L1 |
| GSVPG7 | 12 | 5 | 5,6 | 70,2 | 30 |



| Integrated by-pass and check valve | | | | | |
|------------------------------------|---|---|---|------|----|
| CODE | A | B | C | L | L1 |
| R3V050505PH | 6 | 6 | 6 | 44,3 | 52 |



| Integrated by-pass and check valve | | | | | |
|------------------------------------|---|---|---|------|------|
| CODE | A | B | C | L | L1 |
| R3V050505PH3 | 6 | 6 | 6 | 33,4 | 63,4 |

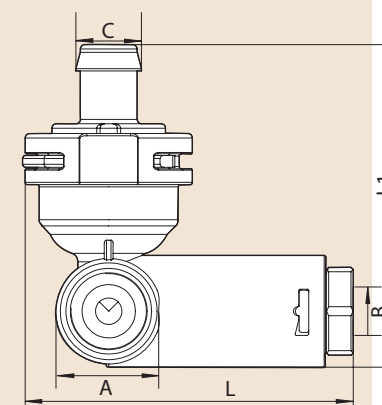
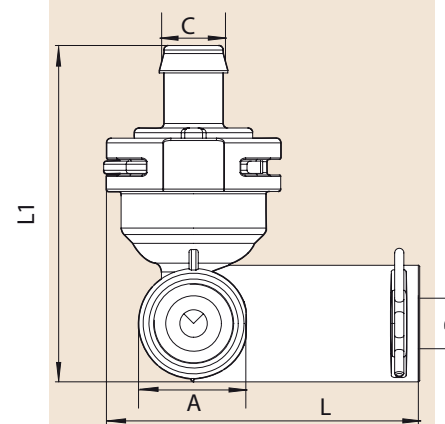
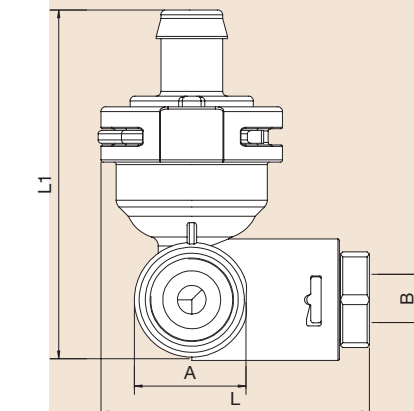
Consult our technical/commercial department for all your needs.

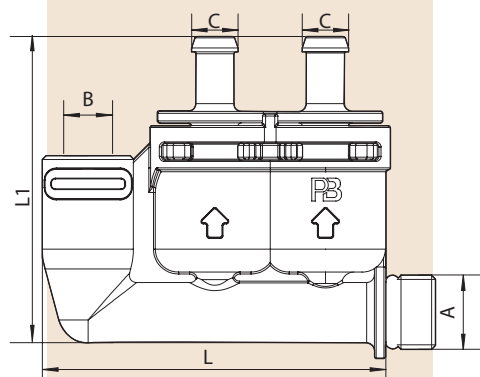
| Integrated Self priming c/w push-in connector | | | | | |
|---|-------|---|---|------|------|
| CODE | A | B | C | L | L1 |
| R3VRBG4M1/8PG7 | M1/8" | 4 | 6 | 28,1 | 36,6 |

| Integrated Self priming and check valve c/w fork connection | | | | | |
|---|-------|---|---|----|------|
| CODE | A | B | C | L | L1 |
| R3VRBG4M1/8PG7E | M1/8" | 4 | 6 | 34 | 36,6 |

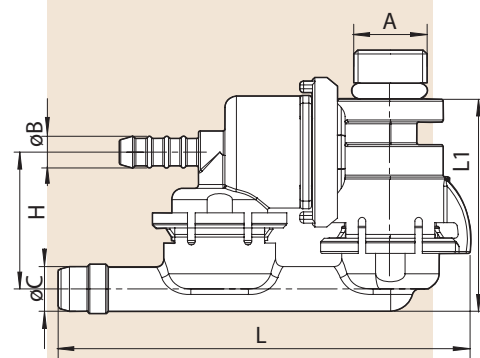
| Integrated Self priming and check valve c/w push-in connector | | | | | |
|---|--------|---|---|------|------|
| CODE | A | B | C | L | L1 |
| R3VRBG4M1/8PG7B | M 1/8" | 4 | 6 | 37,3 | 36,6 |

Consult our technical/commercial department for all your needs.

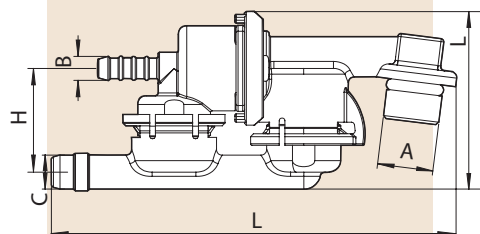




| Multi-valve c/w self-priming and safety function | | | | | |
|--|--------|---|---|----|------|
| CODE | A | B | C | L | L1 |
| R4VPG5M1/8/CY | M 1/8" | 4 | 5 | 45 | 40,1 |

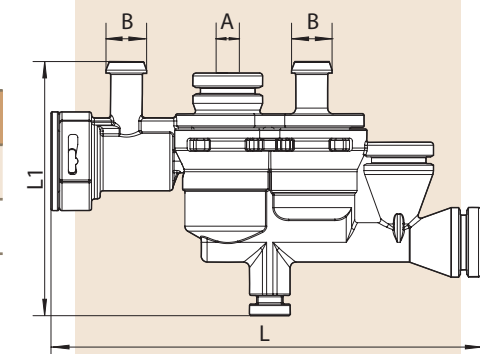


| Multi-valve c/w self-priming and safety function | | | | | | |
|--|--------|---|---|----|------|----|
| CODE | A | B | C | H | L | L1 |
| R3VM1/80406/MK | M 1/8" | 4 | 6 | 18 | 54,5 | 28 |

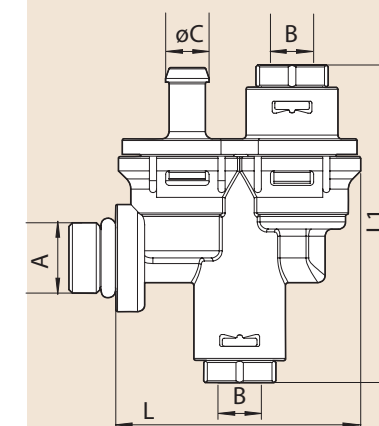


| Multi-valve c/w self-priming and safety function | | | | | | |
|--|--------|---|---|----|----|----|
| CODE | A | B | C | H | L | L1 |
| R3VM1/80406CLWK | M 1/8" | 4 | 6 | 18 | 71 | 31 |

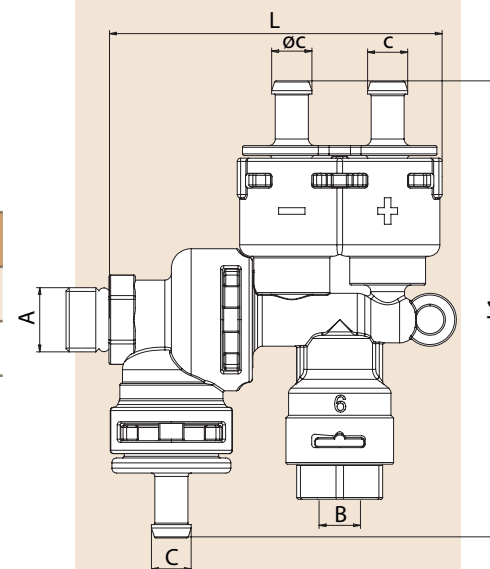
Consult our technical/commercial department for all your needs.



| Multi-valve c/w self-priming and safety function | | | | |
|--|---|---|------|------|
| CODE | A | B | L | L1 |
| R5VMPG6CL/SG/01 | 4 | 7 | 74,3 | 43,8 |



| Multi-valve with self-priming, check-valve function and boiler connection | | | | | |
|---|--------|---|---|----|----|
| CODE | A | B | C | L | L1 |
| R4VPG6RD4/PO | M 1/8" | 4 | 5 | 40 | 44 |



| 5 way valve c/w self priming, by-pass and safety function | | | | | |
|---|--------|---|---|-------|----|
| CODE | A | B | C | L | L1 |
| R5VM1/8VNR2SICA | M 1/8" | 6 | 6 | 50,35 | 69 |

Consult our technical/commercial department for all your needs.



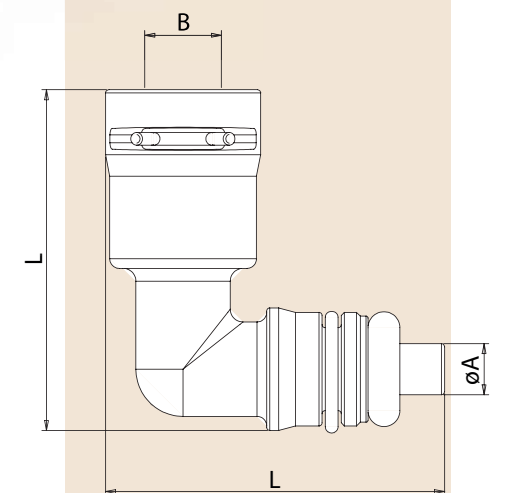


NEW PRODUCTS 2017



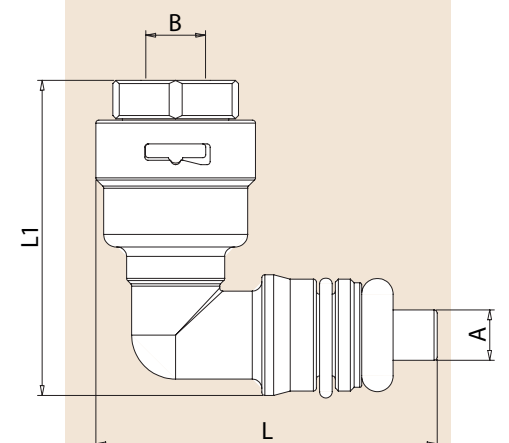
Boiler connector with fork

| CODE | A | B | L |
|------------|---|---|------|
| FRCI04-RC4 | 4 | 4 | 26,6 |



Boiler connector with bayonet

| CODE | A | B | L | L1 |
|------------|---|---|------|----|
| FRBG04-RC4 | 4 | 4 | 27,2 | 25 |



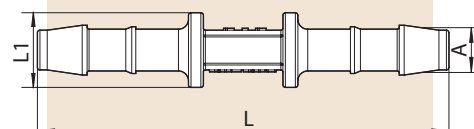
BOILER CONNECTORS

The connectors on the boiler are made from PPS (polyphenylene sulfide), which guarantees excellent thermal and mechanical performance, thus allowing them to be connected directly to the boilers.

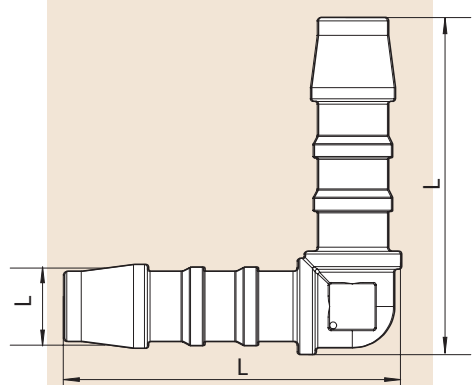
Instead of a thread, this kind of connection foresees a seeger which guarantees mechanical arrest and an o-ring to prevent leakage of fluid.

They have been designed to be revolving and with a 90° form, allowing complete flexibility ahead of often very restricted loading gauges.

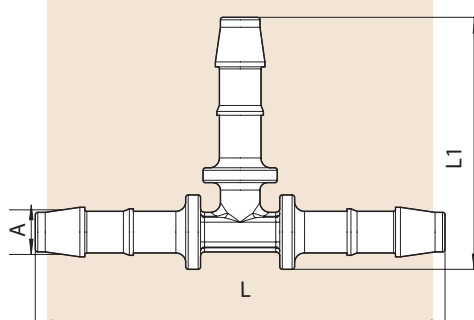
Consult our technical/commercial department for all your needs.



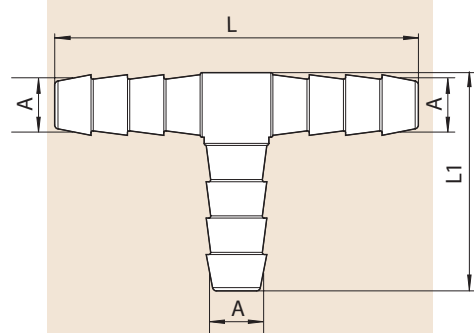
| Straight barb end connector | | | | |
|-----------------------------|---|---|------|-----|
| CODE | A | B | L | L1 |
| QDPG0404/NM | 4 | 4 | 41,4 | 7,5 |
| QDPG0604/NM | 4 | 6 | 41,4 | 7,5 |
| QDPG0606/NM | 6 | 6 | 41,4 | 7,5 |



| Elbow barb end connector | | |
|--------------------------|---|------|
| CODE | A | L |
| QLPG000505/NM | 5 | 24,5 |
| QLPG000606/NM | 6 | 24,5 |



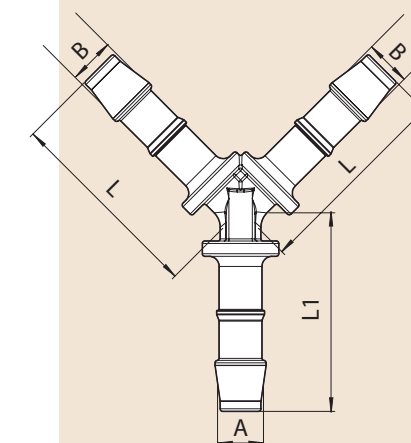
| T barb end connector | | | |
|----------------------|---|------|------|
| CODE | A | L | L1 |
| QTPG040404/NM | 4 | 41,4 | 25,4 |
| QTPG050505/NM | 5 | 41,4 | 25,4 |
| QTPG060606/NM | 6 | 41,4 | 25,4 |



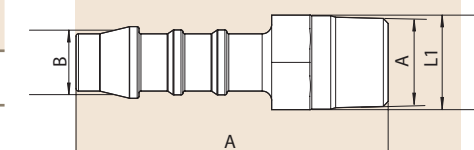
| T barb end connector | | | |
|----------------------|---|----|----|
| CODE | A | L | L1 |
| RTPG060606 | 6 | 45 | 27 |

Consult our technical/commercial department for all your needs.

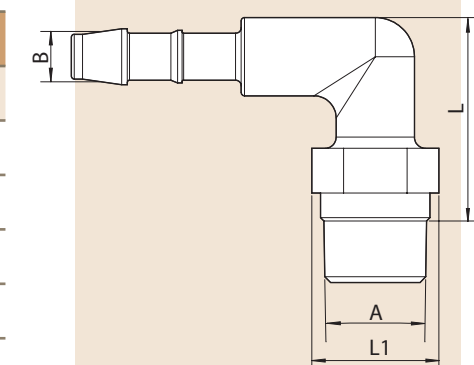
| Y barb end connector | | | | |
|----------------------|---|---|------|------|
| CODE | A | B | L | L1 |
| QYPG040404/NM | 4 | 4 | 19,7 | 19,7 |
| QYPG060404/NM | 6 | 4 | 19,7 | 24 |
| QYPG060606/NM | 6 | 6 | 27 | 26 |



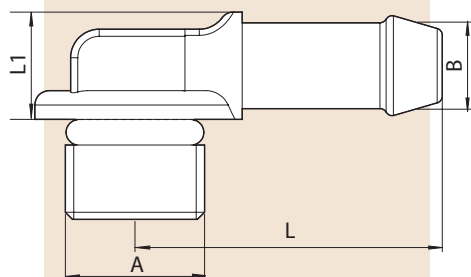
| Straight barb end connector c/w male thread | | | | |
|---|----------|---|------|----|
| CODE | A | B | L | L1 |
| QDPG010006/NM | 1/8 BSPT | 6 | 32,7 | 10 |
| QDPG020004/NM | 1/4 BSPT | 4 | 34,4 | 16 |
| QDPG020006/NM | 1/4 BSPT | 6 | 39,7 | 14 |



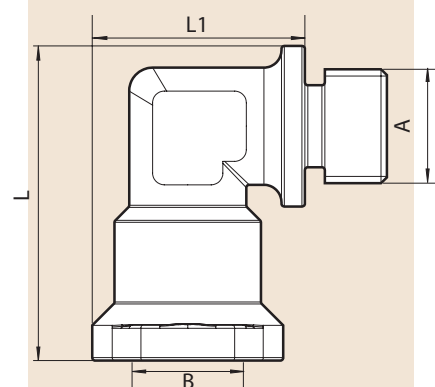
| Elbow connector with BSPT thread and barb end | | | | |
|---|----------|---|------|------|
| CODE | A | B | L | L1 |
| QLPG010004/NM | 1/8 BSPT | 4 | 18,2 | 11,4 |
| QLPG010006/NM | 1/8 BSPT | 6 | 25 | 11,4 |
| QLPG010008/NM | 1/8 BSPT | 8 | 25,2 | 11,4 |
| QLPG020006/NM | 1/4 BSPT | 6 | 32 | 16 |



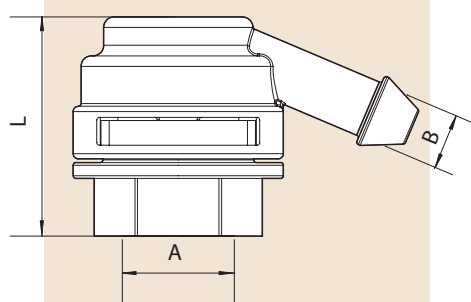
Consult our technical/commercial department for all your needs.



| Elbow connector c/w pump connection and barb end | | | | |
|--|-------|---|------|-----|
| CODE | A | B | L | L1 |
| QXVT507269 | M1/8" | 6 | 21,5 | 7,5 |



| Elbow connector c/w M/F thread | | | | |
|--------------------------------|-------|-------|------|------|
| CODE | A | B | L | L1 |
| RGMF0121PO | M1/8" | F1/8" | 26,9 | 18,2 |



| 67° connector with thread and barb end | | | |
|--|--------|---|------|
| CODE | A | B | L |
| RGPL212304 | F 1/8" | 4 | 62,5 |

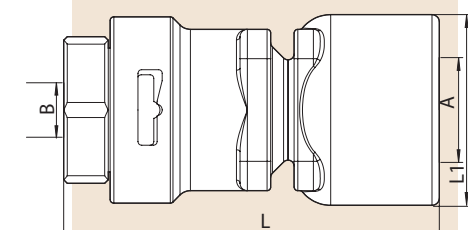
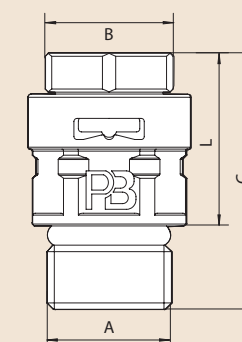
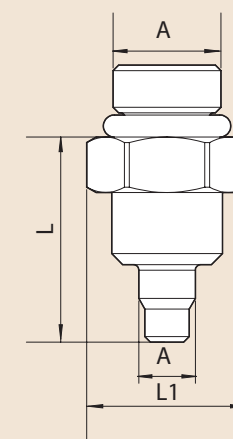
Consult our technical/commercial department for all your needs.

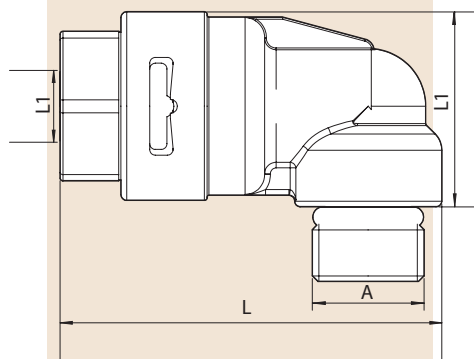
| Straight push-out connector | | | | |
|-----------------------------|-------|---|------|------|
| CODE | A | B | L | L1 |
| RRCA110006-1/PO | M1/8" | 5 | 18,5 | 14,5 |

| Straight connector with M thread and bayonet | | | | |
|--|--------|---|----|------|
| CODE | A | B | C | L |
| RRBD04M1/8 | M 1/8" | 4 | 20 | 13,5 |

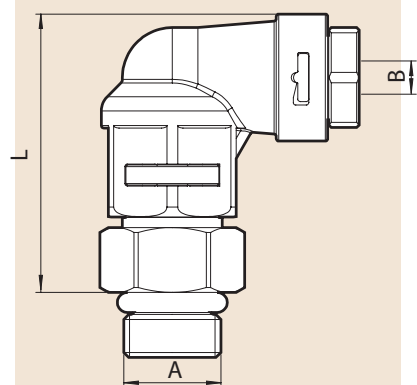
| Straight connector with F thread and bayonet | | | | |
|--|--------|------|---|----|
| CODE | A | B | L | L1 |
| RRBD04F1/8/001 | F 1/8" | 25,6 | 5 | 13 |

Consult our technical/commercial department for all your needs.

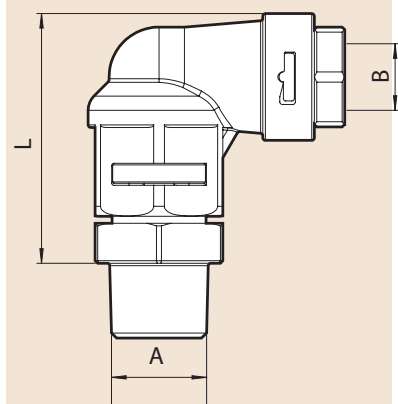




| Elbow connector with M thread and bayonet | | | | |
|---|-------|---|------|----|
| CODE | A | B | L | L1 |
| RRBG06M1/8 | M1/8" | 6 | 33,2 | 17 |



| Elbow connector with M thread and bayonet | | | |
|---|-------|---|------|
| CODE | A | B | L |
| RRCBG11RR4/PO | M1/8" | 4 | 27,9 |
| RRCBG11RR6 | M1/8" | 6 | 36,3 |



| Swivel elbow connector with brass M thread and bayonet | | | |
|--|-------|---|------|
| CODE | A | B | L |
| 58RRCBG11RR4 | M1/8" | 4 | 25 |
| 58RRCBG11RR6 | M1/8" | 6 | 34,5 |

Consult our technical/commercial department for all your needs.



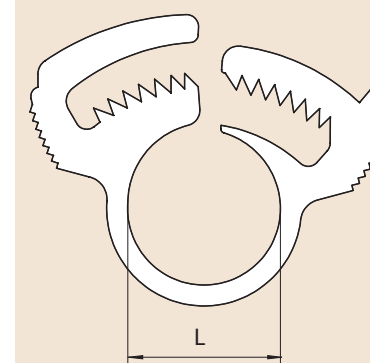


CLAMPS

The clamps are made from PA66 or POM and, thanks to the dentition system, it is possible to regulate closure for tubes of various diameters.



| Clamp for tubes | |
|-----------------|---------|
| CODE | L |
| QFAS6/8 | 6/8 mm |
| QFAS8/10DM | 8/10 mm |



Consult our technical/commercial department for all your needs.

NOTES:

This image shows a full page of blank graph paper. The grid consists of small, uniform squares formed by thin, light gray lines. There are no margins, text, or other markings on the page.

NOTES:

This image shows a full page of blank graph paper. The grid consists of thin, light gray horizontal and vertical lines that intersect to form small squares across the entire surface. There are no margins, text, or other markings on the paper.

PRESBLOCK

www.presblock.com

Pres Block S.p.A.

Via Alpignano, 151 - 155
10040 Caselette (TO) Italia
tel +39 011.9688055
fax +39 011.9688668